

**INSTALLATION INSTRUCTIONS**  
**DESCRIPTION:** Engine Protection Kit  
**PART NUMBER:** 1WD-F43B0-V0  
**MODEL:** YZF-R3



**⚠ WARNING**

Please read and understand these instructions completely before installation to avoid possible injury, or damage to the accessory or vehicle.

**NOTICE:**

This installation requires a torque wrench and should be performed by an authorized Yamaha dealer or other qualified technician.

**WARRANTY INFORMATION:**

Genuine Yamaha Accessories are covered by a one-year limited warranty against defects in material or workmanship. Labor for replacement of defective components is not covered. See your Yamaha dealer for a copy of the warranty statement.

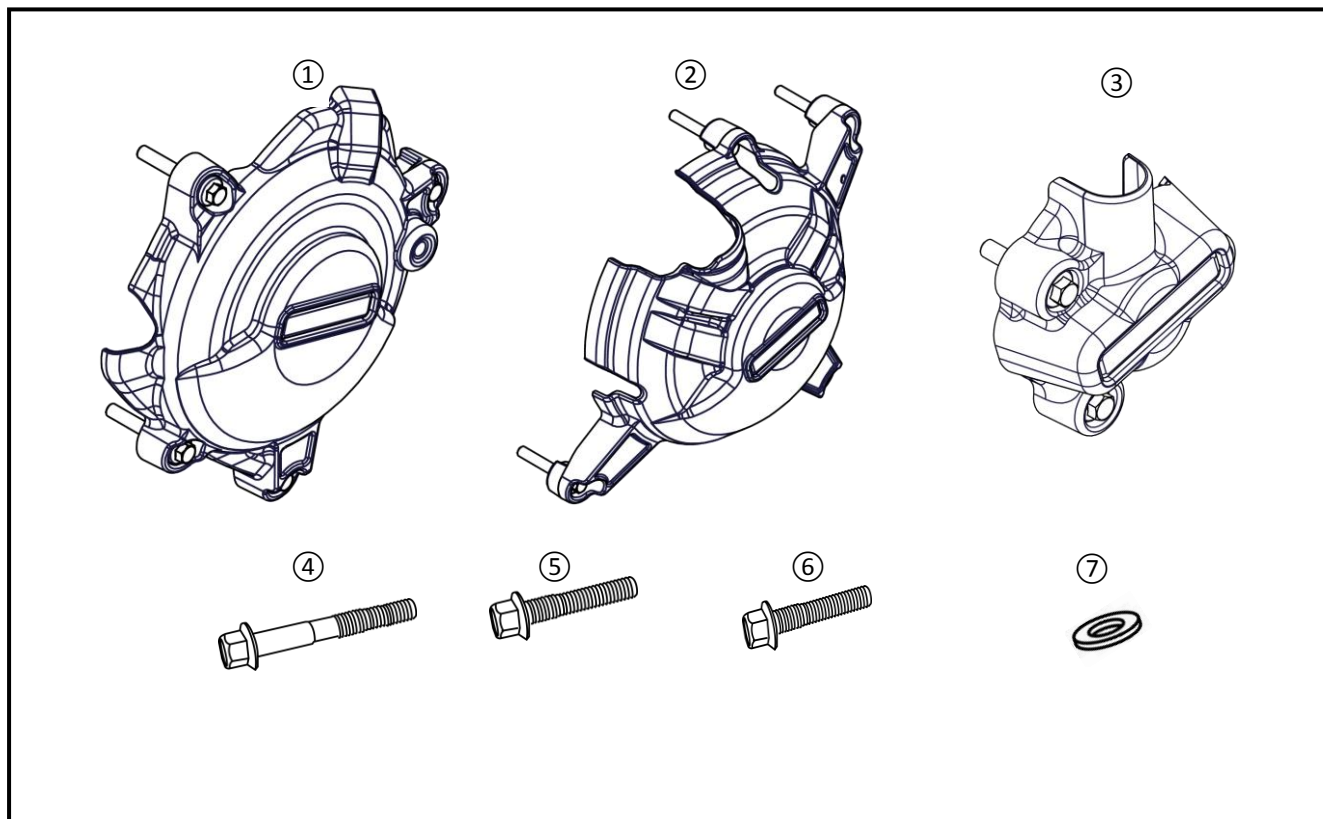
**DEALER OR INSTALLER:**

These instructions contain important information for future reference and *must* be given to the customer.

**PARTS LIST:**

No.	Part Number	Description	Qty
--	<b>1WD-F43B0-V0</b>	Engine Protection Kit	--
①	*	Generator Protector	1
②	*	Clutch Protector	1
③	*	Water Pump Protector	1
④	*	M6 x 40mm Hex Head Flange Bolt	1
⑤	*	M6 x 30mm Hex Head Flange Bolt	3
⑥	*	M6 x 35mm Hex Head Flange Bolt	7
⑦	*	Copper Washer	2

\* Part supplied with kit only and not available separately.



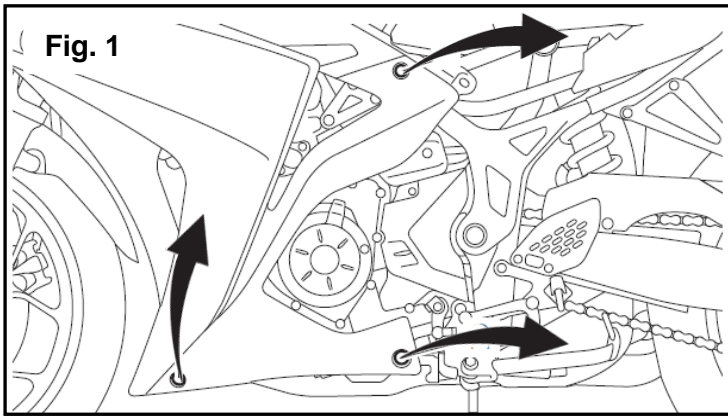


Fig. 1

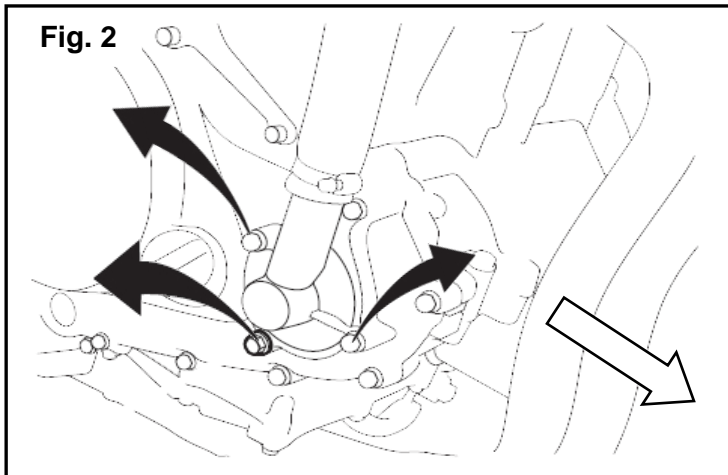


Fig. 2

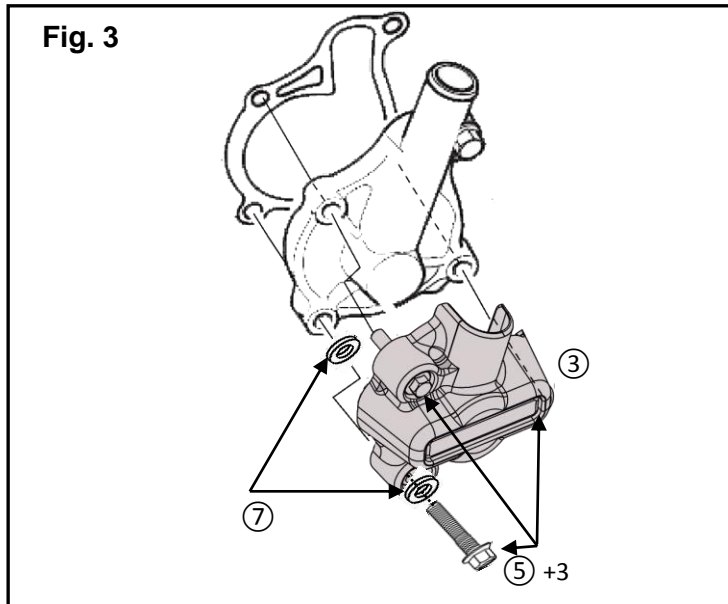


Fig. 3

### PREPARATION:

- Stand motorcycle on a secure and level surface.
- Clean all mounting surfaces before beginning installation

### INSTALLATION:

1. Remove the lower cowlings on both left and right side (Fig. 1). Follow the instructions in the Service Manual.
2. Working on the right side of the motorcycle, remove the Radiator Drain Bolt and drain the radiator coolant using the instructions in the Service Manual (Fig. 2). The bolt and the copper washer will not be reused.

### **⚠WARNING**

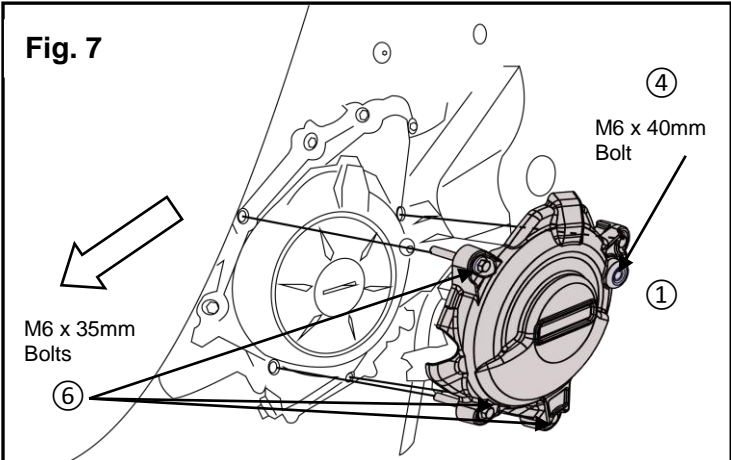
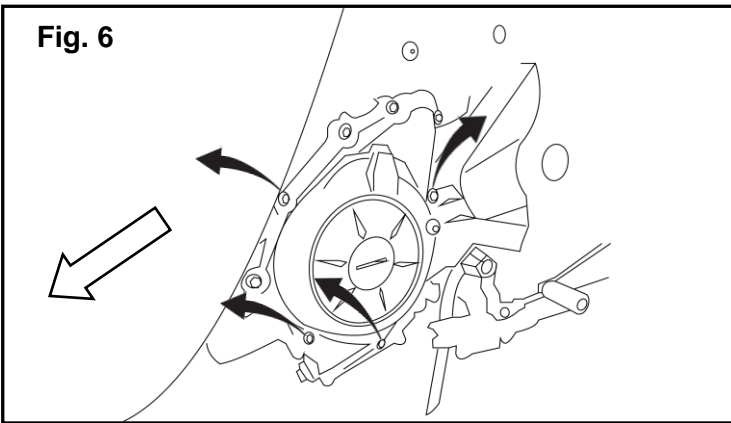
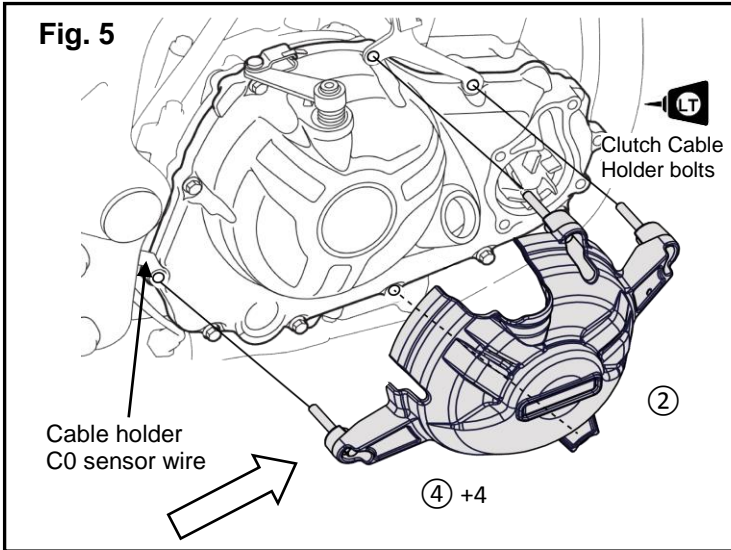
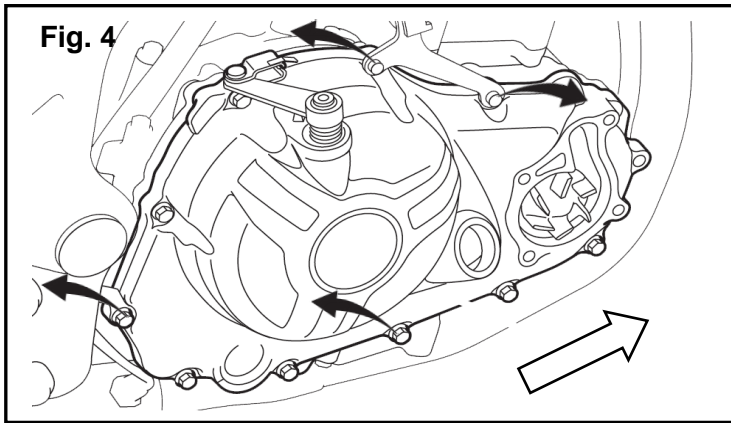
**A hot radiator is under high pressure. Therefore, do not remove the radiator cap when the engine is hot. Scalding hot fluid and steam may be blown out, which could cause serious injury. When the engine has cooled, open the radiator cap as follows: Place a thick rag or a towel over the radiator cap and slowly turn the radiator cap counter-clockwise toward the detent to allow any residual pressure to escape. When the hissing sound has stopped, press down on the radiator cap and turn it counterclockwise to re move.**

3. Remove 2 additional bolts that hold the water pump to the engine as shown in Fig.3. Do not remove the 4<sup>th</sup> bolt, leave it in place.

**Note:** There is a gasket between the water pump housing and the engine. Do not remove the pump unless you have to replace the gasket (Fig.3). Replace the gasket with a new one if it has been damaged in any way.

Replace the washer on the radiator drain bolt if it has been damaged.

4. Install the Water Pump Protector over the Water Pump. Install the 3 M6 x 30mm Hex Head Flange Bolts (5) to secure both the water pump cover and the water pump to the engine case. Be sure to install 2 copper washers (7) onto the bolt taking care to place 1 between the water pump and the collar inside the water pump protector and the other between the bolt and the cover. Torque these three bolts to 10 Nm (1.0m-kgf, 7.2 ft-lbf).
5. Use the clutch lever free play adjustment bolt to release tension on the clutch cable. Refer to the service manual for specific procedures.
6. Remove 4 bolts as shown in Fig. 4, from the Clutch Cover. These bolts will not be reused. The cable holder for the CO sensor wire will be reused.



7. Install the Clutch Protector (2) using 4 M6 x 35mm Hex Head Flange Bolts (6) as shown in Fig. 5. Apply LOCTITE® to the 2 clutch cable holder bolt locations. Take care with the clutch cable control arm and the two bolts that pass through it. Torque all 4 bolts to 10 Nm (1.0m-kgf, 7.2 ft-lbf). Ensure the Cable holder for the CO sensor wire is reinstalled and that the cable is secured.

**Note:** Ensure clutch free play is between 10.0 and 15.0mm. Follow the service manual procedure to check and adjust clutch free play.

8. Working on the left side remove 4 bolts, as shown in Fig. 6, from the Generator Cover. These bolts will not be reused.
9. Install the Generator Protector (1) using 1 M6 x 40mm Hex Head Flange Bolt (4) and 3 M6 x 35mm Hex Head Flange Bolts (6) as shown in Fig. 7. Torque all 4 bolts to 10 Nm (1.0m-kgf, 7.2 ft-lbf).
10. Refill the radiator with coolant. Start the engine and allow the motor to reach operating temperature. Check for coolant leaks. Check torque on the water pump bolts and for leaks at the copper washer or water pump gasket. Replace the washer and/or gasket as needed.
11. Install the lower cowlings you removed in step 1.

**Part Numbers:**

Copper Washer: 90430-06014-00  
Water Pump Gasket: 90430-06014-00

**MAINTENANCE:**

Periodically check all hardware for tightness and secure as necessary.

**CARE AND CLEANING:**

Wash using a mild soap and water solution and soft cloth. Ensure bag is dry before storing.

**CUSTOMER SERVICE:**

For further information see your Yamaha dealer.

**ESTIMATED TIME TO INSTALL: 1.0 HR**